

# STEERABLE PIPE RANGER II

## Multi & Single Conductor Wheeled Transporters

The Steerable Pipe Ranger II is a rugged and versatile robotic camera transporter designed to traverse silt, mud and debris commonly found in storm and sanitary sewers. The SPR II is designed with single-point wheel removal to facilitate speedy configuration changes for various pipe diameters and conditions. The unique built in two (2) speed transmission doubles the torque of the unit to produce maximum pulling power in large diameter pipe when the 10.5" (267 mm) diameter tires are installed.



Operates with up to 2000' (610 m) of single or multi-conductor cable to inspect 7" (178 mm) relined through 72" (1829 mm) pipe.



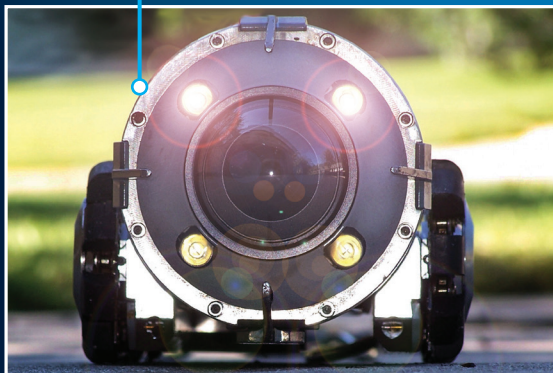
Single-point wheel removal for speedy configuration changes in various pipe diameters and conditions.



Multiple wheel sets are available to maximize bottom clearance, traction, and optimum camera position.



The SPRII can operate with the CUES Digital Side Scanning Camera (DUC).



\* SPRII transporters are shown with the optional OZII camera.



8" Rubber (203 mm)



10"- 15" Rubber  
(254-381 mm)



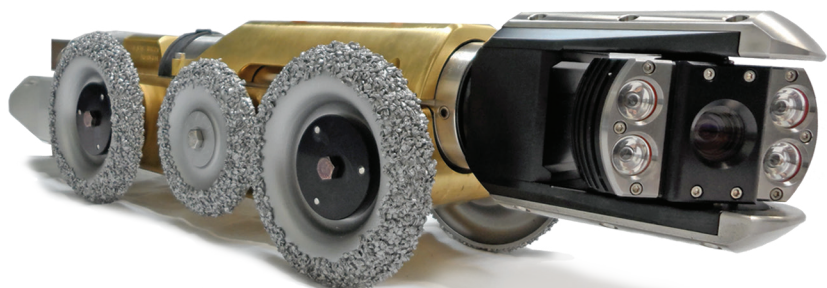
12" (305 mm)  
Pneumatic

# SPR II Transporter

## Features & Benefits



8" Steel (203 mm)



10" - 15" Steel  
(254-381 mm)



18" - 72" Knobby  
(457-1829 mm)



THE SPR II CAMERA TRANSPORTER IS DESIGNED TO TRAVERSE SILT, MUD AND DEBRIS COMMONLY FOUND IN STORM AND SANITARY SEWERS.

- Single point removal of wheels; multiple wheel sets are available to maximize bottom clearance, traction, and optimum camera position.
- Optional remote operated electronic camera lift or manual camera lift.
- Operates with all CUES cameras: pan-and-tilt and optical zoom.
- Freewheel, powered reverse, forward variable speed control.
- Operates with the CUES Digital Side Scanning Camera (DUC).
- Designed to provide clearance in 7" (178 mm) diameter pipe; can inspect 8" (203 mm) relined pipe.
- Two-speed transmission doubles the torque and maximizes traction in larger diameter pipe or in difficult pipe conditions.
- Rear tip-up bulkhead connector minimizes strain on the cable connection during the inspection and retrieval.
- Wheels and spacers designed for the CUES Compact Steerable Pipe Ranger, LAMP II Lateral Launcher, and wheeled / tracked transporter can be used on the Steerable Pipe Ranger II without the need for modification.
- The SPR II can be used with the wireless gamepad controller for all camera and transporter functions.
- An aluminum version is available for those that require a lightweight transporter for their inspection needs.